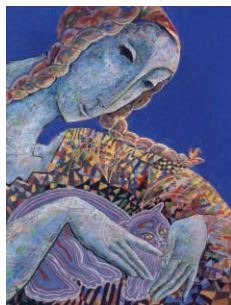


# The Art of Expression

The Hahnemühle Digital FineArt Collection



## Albrecht Dürer, 210 g/m<sup>2</sup>

Natural White, Genuine 'mould-made', 50% rag content

©2000 Jesús Vilallonga "Blue Malvi" – www.vilallonga.com

### Product Description

210 gsm mould-made watercolour paper, with a textured surface. The texture enhances the natural texture of the original paper that was drawn or painted onto. Also suits oil and acrylic mediums well.

### Applications and Characteristics

The printed side of this paper has been specially coated for excellent image sharpness and optimum colour graduation. The coating also offers a very high level of water resistance.

Common applications include:

Fine art reproduction, business cards, greetings cards, post cards, menu and Novelty applications, certificates and presentation prints for display purposes.

### Physical Characteristics

	Unity	Valuation	Test Norm / Notes
Test Conditions		23°C / 50% R.H.	CSS04
Weight total	g/m <sup>2</sup>	210	ISO536
Thickness	mm	0,35	ISO534
Whiteness	%	> 87,0	W <sub>cie</sub> / D65, 2°
Opacity	%	> 95,0	DIN 53146
Media Colour		natural white	not bleached
pH-Value surface		6,0	
pH-Value total		8,1	DIN 53124
Water resistance		very high	
Cobb		80,0	EN 20 535
Ink limit	%	> 220	
Special features		-	

All indicated data to be understood as typical average values.

### Conditions of use and storage

Use and store at a relative humidity of 35 to 65% and a temperature of 10 to 30° C (50° – 86°F.)

All recommendations and product indications are for your guidance, and are subject to our test criteria, these remain subject to change without prior notice. There is no guarantee that the same results can be consistent.

Use care in handling printed material, surface susceptible to abrasion.

Store papers in archive quality envelopes, folders, and boxes.

Use only archive grade tapes and glues for mounting & framing.